

# Fully Automated Turnkey Centrifuge Coating Machines

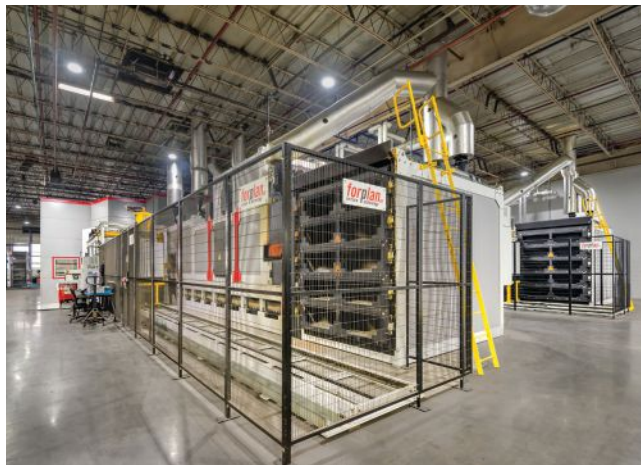
Brad Hanna  
Hanna Finishing Solutions  
Portage, MI, USA  
www.HannaFinishingSolutions.com

Investment, partnership, innovation and responsibility lead to smarter and more sustainable solutions.

Hall of Fame basketball player and coach **John Wooden** said it best “Character is defined by what a person does when no one is looking.” I agree and I assimilate this expression in business. How does a company function in difficult or trying times? It is easy to celebrate the wins and coast when everything is clicking and business is good; smooth sailing so to speak. But what about when companies and leaders have tough decisions to make behind closed doors during uncertain times?

That’s where **Forplan** succeeds. Forplan, a Swiss-based company that manufactures surface treatment equipment had tough decisions to make during the pandemic in 2020. Rather than bury their heads in the sand, the Forplan Team invested in themselves and developed what is known today as the Forplanet XXL, a fully automated, turnkey, centrifuge coating machine equipped with:

- Soft handling.
- High throughput (realistically 16,500 lbs/hr or up to 185 ft<sup>3</sup>/hr). Parts as small as 0.15" up to 8" long with recessed heads.
- Small equipment footprint. How much is the value per square foot in your plant?
- Energy savings 20% on average compared to conventional lines.
- Coating material consumption 25% less on average. We have customers realizing significant savings of coating materials, up to 50%.
- 20% smaller CO<sub>2</sub> footprint compared to conventional lines.



- True Patented 2-Basket Planetary Spin. Two baskets rotate around a center axis up to 190 rpms while each basket is spinning at a slower rpm. This creates centrifugal force up to 32g. This equates to coating consistency. All parts see the same centrifugal parts and coating thickness.
- Integrated curing and cooling with automatic return for multiple coating layers.

I discussed the decision to thrive rather than retreat with Forplan Leader & CEO **Bruno Forster**. Forster admits, “We don’t follow the cycle. We create our own. Not out of defiance, but out of a deep belief that real innovation requires the courage to think differently and the discipline to act on it.” He continues, “At the heart of our culture is a simple but

powerful idea: freedom and responsibility belong together. We trust one another to take ownership – not because we have to, but because we want to. Ownership gives us the freedom to grow, to lead and to shape what’s next. And it reminds us that we are not just part of a system – we are active shapers of it. This is how we work. With respect for each other, with belief in what we’re building, and with the quiet strength of people who take responsibility; for their actions, their impact and their future.”

All of the attributes that are associated with the Forplanet XXL are important today more than



# EMPHASIS: Surface Treatment

ever. The good news is our industry is growing. According to **Jim Soma** of **Magni**, global leader of zinc flake performance coatings, “Zinc flake coatings are gaining more and more traction with the advancement of the coating technology and application methods and equipment. This has led to being able to coat more difficult part sizes and geometries. The success of these coatings in the past 20 or so years in the automotive industry has led to branching out into different market sectors like heavy truck, agriculture equipment, renewable energy (solar and wind) and construction.” Soma continues, “Recent developments in zinc flake coatings emphasize environmental responsibility, regulatory compliance and performance enhancement. As industries continue to prioritize sustainability and durability, these coatings are poised to play an important role in the future of metal protection.”

This is good news for companies such as **ARaymond** in Logansport, IN, USA. ARaymond is a family-owned global manufacturing company that specializes in fastening solutions for the automotive industry. In Logansport, they manufacture and coat over 2000 different parts. **Brian Kelley**, Coatings Manager adds, “Having recently installed two Forplan XXL Coating Lines, I can honestly say I feel like we have the best equipment available today. The entire team at Forplan has been excellent to work with. When you partner with Forplan, you have not only the outstanding quality and

craftsmanship but you have some of the best support staff available. When building our needs into the equipment, they listen, and always find a way to make it happen.”

Forplan offers a refreshing example of long-term vision and character. Through investments, partnerships, and a commitment to both innovation and responsibility, Forplan has shown what’s possible when a company decides not just to survive, but to lead. As industries evolve and the demand for smarter, more sustainable solutions continues to grow, companies like Forplan—and the partners who trust them will profit in more ways than one. Contact me to make your business better: +1 269 377 9381 or [brad@hannafinishing.com](mailto:brad@hannafinishing.com).

[www.HannaFinishingSolutions.com](http://www.HannaFinishingSolutions.com)  
[www.forplan.ch](http://www.forplan.ch) • [www.magnicoatings.com](http://www.magnicoatings.com)  
[www.araymond.com](http://www.araymond.com)

FTI

### Company Profile:

*Hanna Finishing Solutions, Portage, MI, USA, works with companies to define and break through barriers to grow profits, increase productivity and eliminate quality concerns. Manufacturer's representative for OEM's of metal finishing equipment; North America.*  
[www.HannaFinishingSolutions.com](http://www.HannaFinishingSolutions.com)



### THE FASTENER MACHINERY

Profiroll is a complete thread die manufacturer. Starting with 3 certified material suppliers all manufacturing of our dies is done in house including the controlled heat treatment and the finishing with optional special patented surface treatment process PROSurface BlackDiamond®.



Being a machine manufacturer we offer the option to test special applications in house before delivery.

### FLAT DIES

- All standard thread forms
- Knurl / Groove Dies

### CYLINDRICAL DIES

- 2 Roll / 3 Roll Dies
- Helical / Annular / In-Feed / Thru-Feed Dies
- SRS Dies

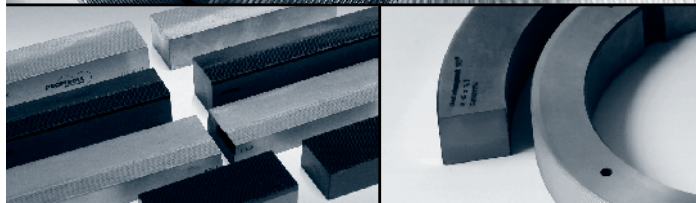
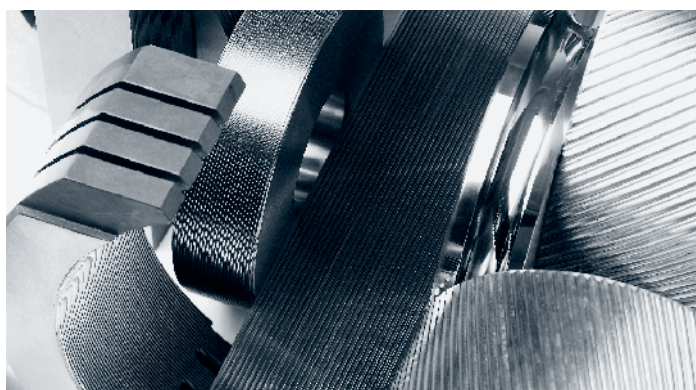
### PLANETARY DIES

- SRS or standard execution

### MATHREAD® /

### MATPOINT®

### LICENSED



Profiroll Technologies USA, Inc. Tel: +1 248 347 9390  
Autania Tec Center Fax: +1 248 347 9392  
48152 West Road, Wixom, Email: [ptusa@profiroll.com](mailto:ptusa@profiroll.com)  
MI 48393 USA [www.profiroll.com](http://www.profiroll.com)

**MACHINE, DIE, PROCESS FROM ONE SOURCE**